



Oregon Wine Research Institute

Welcome to our monthly Vine to Wine newsletter! [Oregon Wine Research Institute](#) faculty and staff work to provide research-based viticulture, enology, and wine business information for the advancement of the Oregon wine industry. This newsletter allows us to extend that information to you, along with other news and events. We welcome industry questions, so contact [OWRI team members](#) with input, feedback, or challenges you face in the vineyard, cellar, or tasting room.

Research Focus



Impact of Grapevine Red Blotch Virus on Pinot noir Grape and Wine Composition

Professor Michael Qian and colleagues examined wine aroma composition of wines produced from GRBV positive vines that had undergone two different leaf removal treatments implemented in the 2018-2020 growing seasons.

OSU Viticulture and Enology Research Facilities

OSU Woodhall III Vineyard

The Oregon State University Woodhall III Vineyard is the only research farm dedicated to viticulture and enology research. It is an important facility for the Oregon Wine Research Institute and its core faculty. Learn more about the projects in progress during 2021 and new blocks being developed.

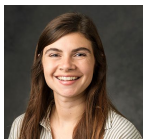
OSU Research Winery

The Oregon State Research Winery is an experiential learning facility that supports enology education, outreach, and research. The winery provides students with the opportunity to develop technical and analytical skills necessary for careers in the wine industry and beyond. Learn more about project updates and facility improvements by faculty research assistant Aubrey DuBois.

Job Opportunity

The Corvallis Farm Unit at Oregon State University is seeking to fill the Woodhall Vineyard Manager position. This is a full-time (1.0 FTE) 12-month, professional faculty position. The incumbent is responsible for the operation of a 26-acre vineyard and managing research efforts at the farm. Applications due by December 13, 2021. [Learn more and apply.](#)

Graduate Spotlight



Miranda Purcell ('19 M.S., Horticulture, Skinkis lab) recently joined the Purdue Wine Grape Team as its viticulture extension specialist. She recently served as the Viticulture Extension Specialist for Colorado and will be now supporting the Indiana wine and grape industry.

Vineyard Pest & Disease Info

Red Blotch Disease - What to Know and How to Test

Dormancy is the best time to test grapevines for Red Blotch Virus. Learn more about when to analyze tissue samples and where you can submit samples for analysis by reading the [OSU Extension Red Blotch Disease article](#).

Pest Alert: Gill's Mealybug

If you have been observing more mealybugs in your vineyards, then it may be worth reading up on which mealybugs may be present. ODA has been monitoring for Gill's mealybug with the help of OSU-SOREC's

Rick Hilton since 2014. [Learn more about Gill's Mealybug.](#)

Spotted Lanternfly Alert

Spotted lanternfly is an invasive pest that has been spreading across the US. Washington state reported its first find of Spotted Lanternfly in late October. Be sure you know what this new invasive pest looks like and how to report its presence if you find it in Oregon. Watch the following video: [Five things to know about Spotted Lanternfly](#). Further information is available from [Oregon Invasive Species Council](#).

OSU Extension Pest Management Survey - Please consider participating in a study conducted by Dr. Jay Pscheidt and Sarah Lowder, PhD student, at Oregon State University. The goal of the study is to understand regional communication and group cooperation. To participate, complete a series of two surveys. [Survey 1](#): Importance of pest and disease management. [Survey 2](#): How do you communicate?

Online Training Opportunities

Need ODA pesticide education credits?

- [Recertification Courses](#) - OSU recently developed two online courses that provide the training you need at your fingertips!
 - [Pesticide Applicator Courses](#) - These are self-paced, online courses offered by OSU that qualify for recertification credits.
 - [In-person courses](#) - Are you tired of of online meetings? Site-based, in-person meetings are back! Check out the offerings here.
 - [FAQ Page](#) - Have questions about licensing? The OSU Pesticide Safety Education Program is here to help.
-

Upcoming Events

UC Davis Current Issues in Vineyard Health | December 8, 2021
Northwest Small Fruits Research Conference | Corvallis, OR, Dec 13-15, 2021
Unified Wine & Grape Symposium | Sacramento, CA, January 25-27, 2022
WineVit | Kennewick, WA, February 7-10, 2022
Oregon Wine Symposium Education Series | live online, Feb 15-17, 2022
Oregon Wine Symposium Trade Show | Portland, OR, March 8-9, 2022
LIVE Annual Meeting | Newberg, OR, March 31, 2022
ASEV National Conference | San Diego, CA, June 19-22, 2022

Stay Connected



Oregon State University
Oregon Wine Research Institute
4017 Agricultural & Life Sciences Building, Corvallis, Oregon 97331
owri.oregonstate.edu